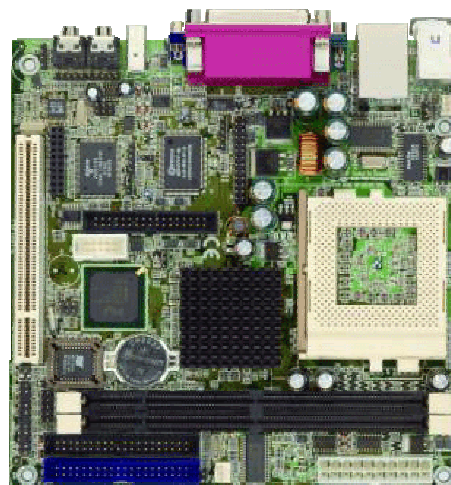


# Quick Reference

## LV-603

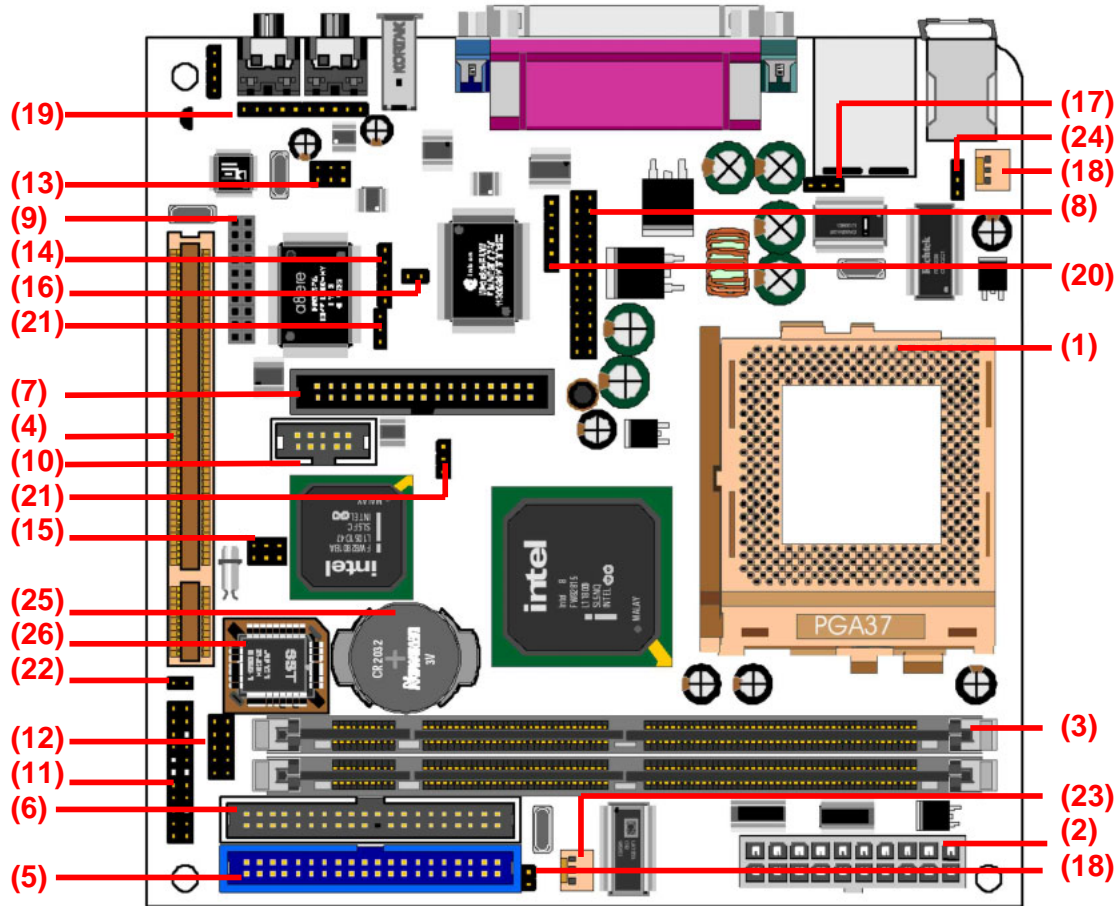
Mini-Flex ATX Socket 370  
PC133 Motherboard  
with Integrated SVGA,  
Intel PRO/100+ LAN, AC97  
3D Audio, IEEE 1394 Interfaces



## Specifications

<b>Form Factor</b>	Mini-Flex ATX / Mini-ITX Motherboard, 170 x 170 mm (W x L)
<b>CPU</b>	Socket 370 Intel Pentium-III / Celeron, VIA C3 CPU supported up to 1.26 GHz and above at 66/100/133 MHz FSB Intel Coppermine FC-PGA, Tualatin FC-PGA2 CPU supported
<b>Memory</b>	Two 168-pin DIMM slots support up to 512 MB PC133 SDRAM
<b>Chipset</b>	Intel 815E & ICH2 chipset, B-step for Tualatin CPU supported
<b>Real Time Clock</b>	Intel ICH2 integrated RTC with onboard lithium battery
<b>Expansive Slot</b>	1 x PCI expansive slot
<b>PCI Enhanced IDE</b>	Dual UltraATA/100 IDE channels up to 4 ATAPI devices
<b>VGA Interface</b>	Intel 815E chipset built-in SVGA controller with 3D/2D engine External DB15 female connector for VGA display
<b>LAN Interface</b>	Onboard Intel PRO/100+ LAN interface, Intel ICH2 chipset with 82562ET 10Base-T/100Base-TX auto-switching, IEEE802.3U compliant
<b>Audio Interface</b>	AC97 3D audio interface with line-in, line-out, CD-in, Mic-in
<b>1394 Interface</b>	Onboard IEEE 1394 interface with Agere 1394 controller Supports 100/200/400 Mbps of data transfer rate
<b>Multiple I/O Port</b>	Intel ICH2 and Winbond LPC super I/O controller 4 x USB ports (two external and two internal USB ports) 2 x RS-232C serial ports (one external and one internal) 1 x FDD port, 1 x PS/2 keyboard / mouse ports
<b>External I/O Port</b>	PS/2 keyboard and mouse RJ45 LAN, dual USB DB25 female parallel port, DB9 male COM1, DB15 female VGA 1394, audio Line-in/out
<b>Power Requirement</b>	Standard ATX power supply
<b>Power Management</b>	ACPI 1.0 compliant, supports power saving mode with ATX PSU
<b>Board Dimension</b>	170 x 170 mm or 6.7 x 6.7 inches
<b>Operation Temperature</b>	0 ~ 60 <sup>0</sup> C (32 ~ 140 <sup>0</sup> F)

## Jumper and Connector Location

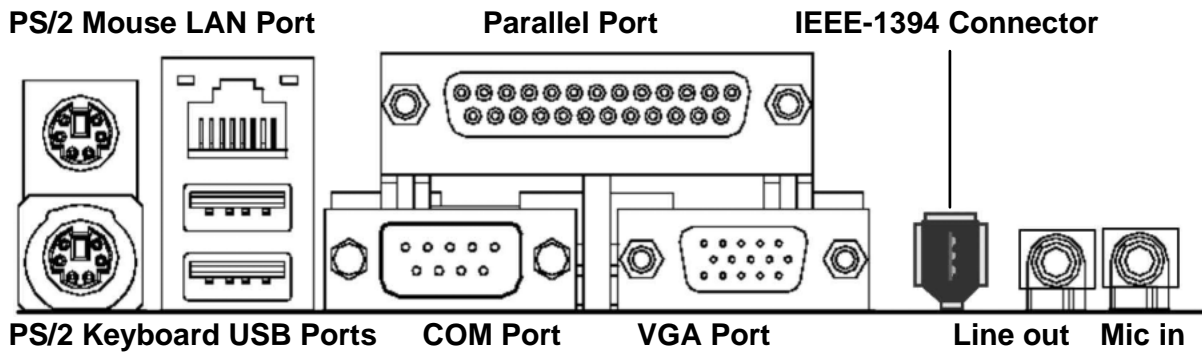


- |  |   |
|--|---|
| 1. PGA370 CPU Socket (PGA370)          | 14. Infrared (IR) Connector (J16)           |
| 2. ATX Power Connector (J27)           | 15. For ICH2 GPIO Pin (J35/J36)             |
| 3. DIMM Sockets (DIMM1~2)              | 16. Case Open Connector (J25)               |
| 4. PCI Connector (PC11)                | 17. LAN LED Connector (J37)                 |
| 5. IDE Connector (IDE1)                | 18. Fan Connector (FAN2/FAN3)               |
| 6. IDE Connector (IDE2)                | 19. Audio Connector (JP9/JP1/JP4)           |
| 7. Floppy Drive Connector (FLP1)       | 20. PS/2 Mouse & Keyboard Connectors (JP13) |
| 8. Digital Video Output Port (J26)     | 21. Clear CMOS and PSW (J9/J3)              |
| 9. CNR Connector (JP12)                | 22. Book Block Protect (J8)                 |
| 10. Serial COM2 Port (JP6)             | 23. IDE Vcc (J34)                           |
| 11. Front Panel Connector (J29)        | 24. PS/2 Keyboard & Mouse Power-On (JP11)   |
| 12. Internal USB Ports Connector (J17) | 25. RTC Battery                             |
| 13. 1394 Port (JP7)                    | 26. BIOS Flash                              |

## Jumpers and Connectors

Jumpers		
J3	1-2	Normal Mode
	2-3	Clear Password (PSW)
J9	1-2	Normal Mode
	2-3	Clear CMOS
J34	Open	NC
	Short	Controller Assign Vcc 5V
J8	Open	Block Protect
	Short	Re-flashing the BIOS
JP11	1-2	Enabled Mouse & Keyboard Power-On
	2-3	Disabled Mouse & Keyboard Power-On
Connectors		
FAN2	<b>CPU FAN Connector:</b> This 3-pin header is used for connecting a CPU chipset fan.	
FAN3	<b>System Fan Connector:</b> This 3-pin header is used for connecting the case fan that keeps the system cool.	
JP7	<b>1394 Connector</b> This 6-pin header is used for connecting 1394 devices.	
JP6	<b>COM2 Serial Port Connector:</b> The 10-pin header is used to connect a serial port extension bracket for adding a second serial port to your system.	
J26	<b>Digital Video Output Port:</b> This 26-pin header is used for connecting an Video port for use of Video devices.	
FLP1	<b>Floppy Port Connector:</b> This 34-pin header is used for connecting an Floppy port for use of Floppy devices.	
JP12	<b>CNR Expansion Connector</b> This 20-pin header is used for connecting to Communication/Network Riser Card	
J16	<b>Infrared (IR) Connector:</b> This 5-pin header is used to connect an infrared (IR) port for use of IR devices.	
J17	<b>Front USB Connectors:</b> This 10-pin header is used for connecting front panel USB ports 3 and 4.	
J35	<b>ICH2 GPIO Pin Connector:</b> This 3-pin header is used for connecting ICH2 GPIO pin 12 and 28.	
J36	<b>ICH2 GPIO Pin Connector:</b> This 3-pin header is used for connecting ICH2 GPIO pin 24 and 27.	
JP9	<b>CD-in Connector:</b> This 4-pin header is used for connecting the CD ROM audio input to the sound card.	
JP4	<b>Line-out Connector:</b> This 5-pin header is used for connecting the stereo headphones or to amplified speaker.	
JP1	<b>MIC &amp; Line-in Connector</b> This 5-pin header is used for connecting the stereo microphone and stereo line-level input on the front panel.	

## I/O Ports



## Front Panel Connector

