



**PASSART**  
VPN / Firewall / Multi-homing

## VPN-4800

- WAN port × 4, LAN port × 8
- Multi-Homing
- Load-Balance
- De Militarized Zone



IEI VPN-4800 Network Security Appliance (hereafter referred to as Passart™) is IPsec (IP security) qualified, which combines encryption, authentication, and key management and establish a virtual private tunneling on the Internet. As a complete solution for Intranet, Extranet and boundless remote access, Passart™ provides a reliable secure connection to company intranet, remote destination, mobile users, company branches or business partners. This not only reduces network setup cost, but also enables the expandability.

## VPN-1400 (SOHO)

- WAN port × 1, LAN port × 4



Passart™ VPN-1400 Network Security Appliance (hereafter referred to as SOHO Passart™) is IPsec (IP security) qualified, which combines encryption, authentication, and key management and establish a virtual private tunneling on the Internet. It acts like building a private network with two guarded gateways. Only those who know the password can connect to the network for file access. This not only protects network transfer from being hacked, but also fulfills extra connection demand.

## Product Features

### VPN

- Secure virtual private network
- Auto reconnection after connection is lost
- Supports DES, 3DES, and AES encryption
- Supports MD5, SHA1 HMAC authentication algorithm
- Internal PASSART and X.509 authentication
- Supports VPN NetBIOS broadcast function
- Supports Mobile User VPN application (should be used with IEI VPN-110)
- Supports Windows 2000/ XP Client

### Firewall

- Adopts dynamic package filtering and DoS protection: Ping flood (Ping of Death), SYN flood, Port Scan, Block IP Fragment
- Supports web filtering
- One-to-one NAT (Network Address Translation)
- Supports virtual server establishment

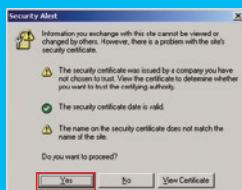
### Broadband Router

- Provides DHCP
- Provides Domain Name Service (DNS) server
- Support NTP and DDNS

5

### Step 6

The following security alert window will pop up. Click Yes to proceed



6

### Step 7

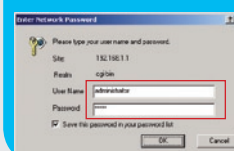
The administration page will be shown. Select the appropriate display language and click Administration.



7

### Step 8

Enter the user name and password. Then click OK. The default user name and password are:  
User Name: administrator  
Password: admin



8

log-in system administrator page

