



Enterprise networks



Process and infrastructures



High performances UPS for single phase application

Comet EX RT

7/11 kVA single phase input / output
5/7/11 kVA three phase input / single phase output

Perfect for rack servers enclosures
and industrial environment

High-availability

- ▶ Hot swappable UPS and battery modules.
- ▶ Internal bypass and maintenance bypass included as standard.
- ▶ The UPS can be connected to two independent electrical sources (sources 1 and 2 can be common or separate).
- ▶ Large input voltage range without draining the battery: 230V +20% to -30% single phase and 400V +15% to -20% three phase.
- ▶ Batteries tested automatically at regular intervals and protected against deep discharge.
- ▶ N+1 redundancy supported by two single units.

Wide choice of backup times

- ▶ From 10 minutes to 2 hours with battery modules or up to 8 hours using the CLA charger module.
- ▶ Optional Battery Integration System for automatic recognition of battery modules and minimising size.

Ergonomy

- ▶ Multilingual LCD display and LEDs for rapid view of the UPS status and the operating log.
- ▶ Self diagnosis and fault messages.

Can be integrated into even the most demanding environments:

Computer

- ▶ Tower / 6U Rack convertible.
- ▶ Comprehensive range of Power Distribution Units for convenient power distribution within the rack.

Comet EX RT tower
10 min runtime model.
Hot-swappable battery
and UPS modules.



Comet EX Network Pack model with
Network Management Card and rack
mounting kit for 19" cabinet (from 800 up
to 1 200 mm depth).

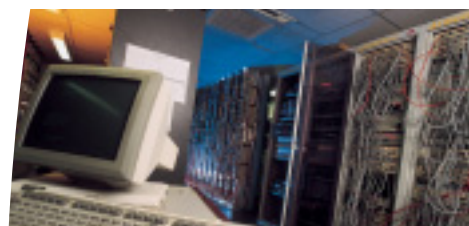
Industrial

- ▶ Compatible with all types of generator set.
- ▶ Can be integrated into building management systems
- ▶ Steel casing
- ▶ Operating temperature up to 45°C
- ▶ Meets Marine vibration test requirements
- ▶ Optional supervision and remote control from UPS terminal control.



Battery
Integration
System to support
up to 8 modules
(1 hour runtime
+ 1 transformer
module).

**Top of the range protection ideal
for servers:**
25 servers (5kVA model)
to 55 servers (11kVA model)



Can be integrated into high density racks.



Ideal for critical applications requiring
high operating continuity.



Compatible with the most demanding environments

THE UNINTERRUPTIBLE POWER PROVIDER

M G E
UPS SYSTEMS

MGE PowerServices™

1-year warranty, including battery.

Associated services (1)

- Warranty extension
- Commissioning: startup of your installation conforming to the manufacturer's specifications.

- Teleservice/ E Teleservice: remote monitoring via the telephone system/Internet.
- Maintenance contracts: a range of convenient maintenance programmes.
- Site audit: load analysis and recommendations in line with the technical environment.

1: Depending on the country, visit www.mgeups.com/services.

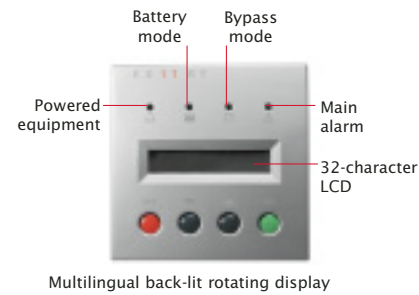
Specifications

	5 kVA	7 kVA	11 kVA
Performances			
Active power kVA / kW	5 / 4 ⁽¹⁾	7 / 4.9	11 / 8
Technology	on-line double conversion with PFC (Power Factor Correction) system ⁽²⁾		
Rated input voltage	200/208/220/230/240/250V single phase 380/400/415V three phase		
Input voltage range	(- 30 %; + 20 %) 230 V ; (-20 %, + 15 %) 400 V		
Input, output frequency range	40-70 Hz, 50 / 60 HZ autoselection, frequency converter as a standard		
Output voltage / THDU	200/208/230/240 / 250 V +/- 2 %; THDU < 2 %		
Overall efficiency	normal mode 91 %, eco mode 97 %		
THDI	THDI < 5 % ⁽³⁾		
Crest factor / short circuit current	3:1 / 100 A		3:1 / 150 A
Overload capacity	>150 % 500 ms; 150 % 30 s; 125 % 60 s; 110 % 120 s		
Temperature operating	45°C for 8 Hrs ⁽⁴⁾ , 40°C continuous		
Back-up times⁽⁵⁾ at 70 % load			
from 10 up to 15 minutes	Standard : 1 power mod. 3U + 1 battery mod. EXB 3U = 6U		
from 15 up to 20 minutes	Standard + 1 battery mod. EXB 3U = 9U		
from 40 up to 65 minutes	Standard + 2 battery mod. EXB 3U = 12U		
Connection			
Input /output	terminal block for 13 mm ² (stranded cable) or 10 mm ² (solid cable)		
Communication			
Port type	6 voltage free contacts DB9 2 A 48 V DC, 1 RS 232 , RJ11 for remote emergency power off		
Slot	1 slot for MGE inter-unit communication card		
Standards and certification			
Performance and safety	IEC 62040-1/IEC 60950/UL 1778 and CSA 22.2 ⁽²⁾		
EMC	IEC 62040-2; EN 50091-2; FCC class A ⁽²⁾ ; EMC B level ⁽⁶⁾		
Certification	UL ⁽²⁾ /TÜV , GS mark,CB, C-Tick,CE, IEC 68-2-6 (vibration tests Marine approval)		
Dimensions (H x W x D) in mm; weight (single phase input / three phase input)			
Comet EX RT standard backup tower	444,5 x 261,2 x 700		
	89,5 Kg	88,3 Kg / 89,5 Kg	94,2 Kg / 95,3 Kg
Comet EX RT standard backup Network Pack rack mounting	261,2 (6U) x 444,5 x 700		
	97,3 Kg	96,1 Kg / 97,3 Kg	102 Kg / 103,1 Kg
Comet EX RT Power module	444,5 x 130,6 x 700 / 130,6 (3U) x 444,5 x 700		
	24,2 Kg	23 Kg / 24,2 Kg	24,9 Kg / 26 Kg
Battery module Comet EXB RT	444,5 x 130,6 x 650 / 130,6 (3U) x 444,5 x 650		
	64,5 Kg	64,5 Kg	68,5 Kg
EX RT CLA module / EX RT Transformer	130,6 (3U) x 444,5 x 650 / 12 Kg / 87 kg		

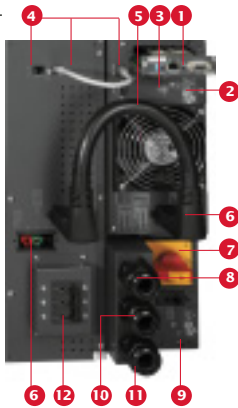
Part numbers

	5 kVA		7 kVA		11 kVA	
Ratings	single-phase	three-phase	single-phase	three-phase	single-phase	three-phase
Input voltage	-	-	-	-	-	-
Comet EX RT standard back-up time Tower	-	68 054	68 070	68 074	68 110	68 114
Network Pack Rack Format ⁽⁷⁾	-	68 056	68 072	68 076	68 112	68 116
EXB RT battery module / EXB RT battery module with EPO built-in	-	-	68 078 / 68 079	-	68 118 / 68 119	-
Comet EX RT Power module (for use with EXB or CLA module)	-	68 057	68 075	68 077	68 115	68 117
Rack kit for Comet EX RT Power module / Comet EXB RT and CLA	-	-	68 001 / 68 002	-	-	-
EX RT Transformer module	-	-	68 003	-	-	-
Comet EX RT CLA module (2 to 8 hours)	-	-	68 004	-	-	-
EX RT Battery Integration System ⁽⁸⁾	-	-	68 005	-	-	-
EMC B level filter module	-	-	68 008	-	68 008	-
Comet PDU 19" rack format ⁽⁹⁾	-	-	66 857	-	-	-
1.8 m battery connection cable ⁽¹⁰⁾	-	-	68 006	-	-	-
UPS Control, remote UPS monitor display	-	-	66 080	-	-	-

1: single phase input not available for 5kVA. 2: applicable to single phase models. 3: single phase input value. 4: at nominal output power for 230 V or 400V input and 230V output. 5: typical values after 3 discharge cycles, batteries 3-5 years, longer backup times available using the CLA or EXB module, ask for details. 6: option for single phase model. 7: the Network Pack version comprises standard back-up time unit + Network Management Card + rack mounting kit 8: trolley capacity 8 modules max, casters, adjustable feet. 9: 12 sockets 4 X IEC 16 A + 8 X IEC 10 A. 10: for non standard inter-module spacing.



- Slot for MGE inter-unit communication card
- 9-pin D output connector
- RJ11 port for remote emergency power off
- Connectors for automatic detection of battery module(s)
- RS 232 communication port
- Connector for supplementary battery module power cable
- Manual bypass for hot maintenance
- Output connectors
- Source switch 1
- Source 1 connector
- Source 2 connector
- Battery circuit breaker



Power management

Solution-Pac 2 software suite on CD
Supplied as standard to assure the local or remote supply to the servers.

Optional Network Management Card
Connect to Ethernet, alarms and supervision using a Web-interface.

Environment Sensor for SNMP / Web card

SNMP and Web monitoring of temperature + RH + status of 2 contacts

Monitoring using Enterprise Power Manager or the NMS

Supervision through Enterprise Power Manager or NMS integration kit :
HP Openview, Tivoli Netview,
CA Unicenter.

Monitoring using Enterprise Power Manager or the integration kit

Jbus/Modbus card

For connecting the UPS to a building management system.

MGE UPS SYSTEMS

140, avenue Jean-Kuntzmann
ZIRST - Montbonnot Saint-Martin
38334 Saint-Ismier Cedex - France
Tel. +33 (0)4 76 18 30 00

CXRT448UK - 02/05

THE UNINTERRUPTIBLE POWER PROVIDER

