

RouteFinder™ VPN

SOHO Internet Security Appliance



Benefits

- Up to 5 IPSec VPN tunnels
- Strong 3DES encryption
- Broadband Internet access for up to 253 users
- Secure Internet firewall services

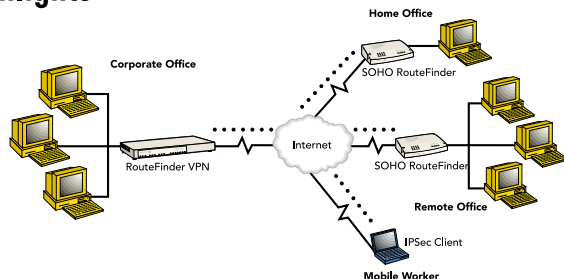
The SOHO RouteFinder VPN Internet security appliance is ideal for the small branch office or telecommuter who needs secure access to the corporate LAN. In addition to providing a WAN Ethernet port for DSL or cable broadband Internet access, it also offers both client-to-LAN and LAN-to-LAN VPN connectivity based on the IPSec protocol. The SOHO RouteFinder supports up to 5 IPSec tunnels and provides 3DES encryption with 700K bps throughput.

Features

- One WAN Ethernet port connects to a DSL or cable modem
- Supports up to 5 IPSec VPN tunnels for secure LAN-to-LAN and Client-to-LAN access over the Internet
- 3DES encryption throughput of 700K bps
- Built-in 4-port 10/100 switch
- Built-in firewall and DHCP services with Network Address Translation (NAT)
- Protects your LAN against Denial of Service (DoS) attacks
- Internet access control tools provide client and site filtering
- Asynchronous port for automatic dial-backup
- Network monitoring via Syslog allows network administrator to view all incoming and outgoing packets, status of connections and specific connection events
- Configuration and management using any web browser
- Works with H.323 Voice over IP products including MultiVOIP gateways or Microsoft NetMeeting
- PPPoE support
- Flash memory for easy updates
- IP address mapping/port forwarding
- Two-year warranty

*Secure VPN
Gateway for
Small Branch
Offices or
Telecommuters*

Highlights



Secure VPN Connections. The SOHO RouteFinder VPN uses the IPsec industry standard protocol, data encryption, and the Internet to provide high-performance, secure VPN connections. For LAN-to-LAN connectivity, the RouteFinder utilizes the IPsec protocol to provide up to 5 tunnels with strong 168-bit 3DES encryption using IKE and PSK key management. For client-to-LAN connectivity, Multi-Tech provides optional IPsec client software allowing road warriors secure access to the company's internal network.

Connect up to 253 Users to the Internet with Broadband Speed. With the SOHO RouteFinder VPN, up to 253 users are connected to the Internet with only one IP account. The WAN Ethernet port supports DSL or cable speeds of up to 6M bps.

Built-in 10/100 Switch. The integrated 4-port 10/100 switch eliminates the need for an additional hub or switch to connect users not on a LAN. It ensures high-speed transmission and can serve as a completely dedicated full duplex backbone.

Network Security. The SOHO RouteFinder VPN uses the NAT protocol to provide security from hackers attempting to access the office LAN. It implements firewall and gateway security for LAN-based resources. Additionally, the SOHO RouteFinder supports Internet access restrictions by IP address, client protocols or a list of forbidden sites.

Automatic Dial Backup. The SOHO RouteFinder also provides an additional asynchronous port that, when connected to a dial-up modem or ISDN terminal adaptor, can serve as a backup resource for Internet access if your cable or DSL service goes down. It can also serve as the primary connection if you do not have broadband connectivity yet in your area.

Virtual Server Support. In addition to providing shared Internet access, the SOHO RouteFinder VPN can support a web, ftp or other Internet servers. Once configured, the SOHO RouteFinder VPN only accepts unsolicited IP packets addressed to the web, ftp or other specified servers.

Specifications

LAN Ports

Number of Ports: 4
Interface: 10BaseT/100BaseTX
Format: 802.3

WAN Ports

Interface: 1 × 10BaseT & 1 × RS232 (V.24)

Protocols

Security: PAP, CHAP, NAT
Network: TCP/IP, DHCP, PPP, PPPoE
Routing: Static, RIP1
VPN: IPsec, PPTP pass through
Filtering: Protocol, port number & IP address

VPN Features

Protocol: IPsec with IKE key management
3DES Encryption: 168-bit; 700K bps throughput
Number of Tunnels: 5

Firewall Features

Port and IP Filtering, Denial of Service Protection (DoS), Network Address Translation (NAT) & Virtual Server

Management Features

Local and Remote Management, Logging, Web Based HTTP & Syslog

Processor

50 MHz 32-bit RISC

Memory

RAM: 16 MB
Flash ROM: 1 MB

Power

5 VDC, 2A

Physical Description

7.1" w × 4.9" h × 1.4" d; 13 oz.
(18.1 cm × 12.5 cm × 3.5 cm; 380 g)

Operating Environment

Temperature Range: 32 - 120°F (0-50°C)
Humidity Range: 25-85% noncondensing

Approvals

FCC Part 15 (Class B), CE Mark, UL60950

Ordering Information

Product	Description	Region
RF550VPN	SOHO Internet Security Appliance	US/Can
RF550VPN-EURO	SOHO Internet Security Appliance	Europe
RF550VPN-GB/IE	SOHO Internet Security Appliance	Britain/Ireland
RFIPSC-1	IPsec VPN Client-1 User	Global
RFIPSC-5	IPsec VPN Client-5 User	Global
RFIPSC-10	IPsec VPN Client-10 User	Global
RFIPSC-50	IPsec VPN Client-50 User	Global

* Specify country when ordering.

Trademarks: RouteFinder, Multi-Tech, & the Multi-Tech logo: Multi-Tech Systems, Inc. / All products or technologies are the trademarks or registered trademarks of their respective holders.

World Headquarters
Tel: (763) 785-3500
(800) 328-9717

www.multitech.com

Multi-Tech Systems (France)
Tel: +(33) 1 64 61 09 81

Multi-Tech Systems (UK)
Tel: +(44) 118-959 7774