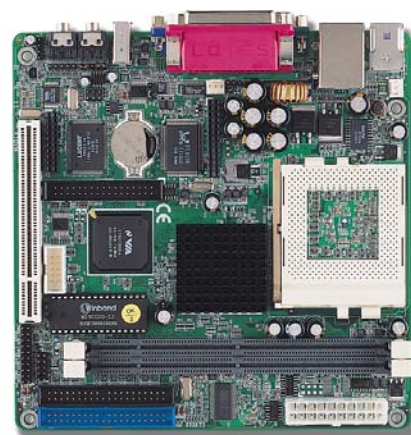


# Quick Reference

## LV-602

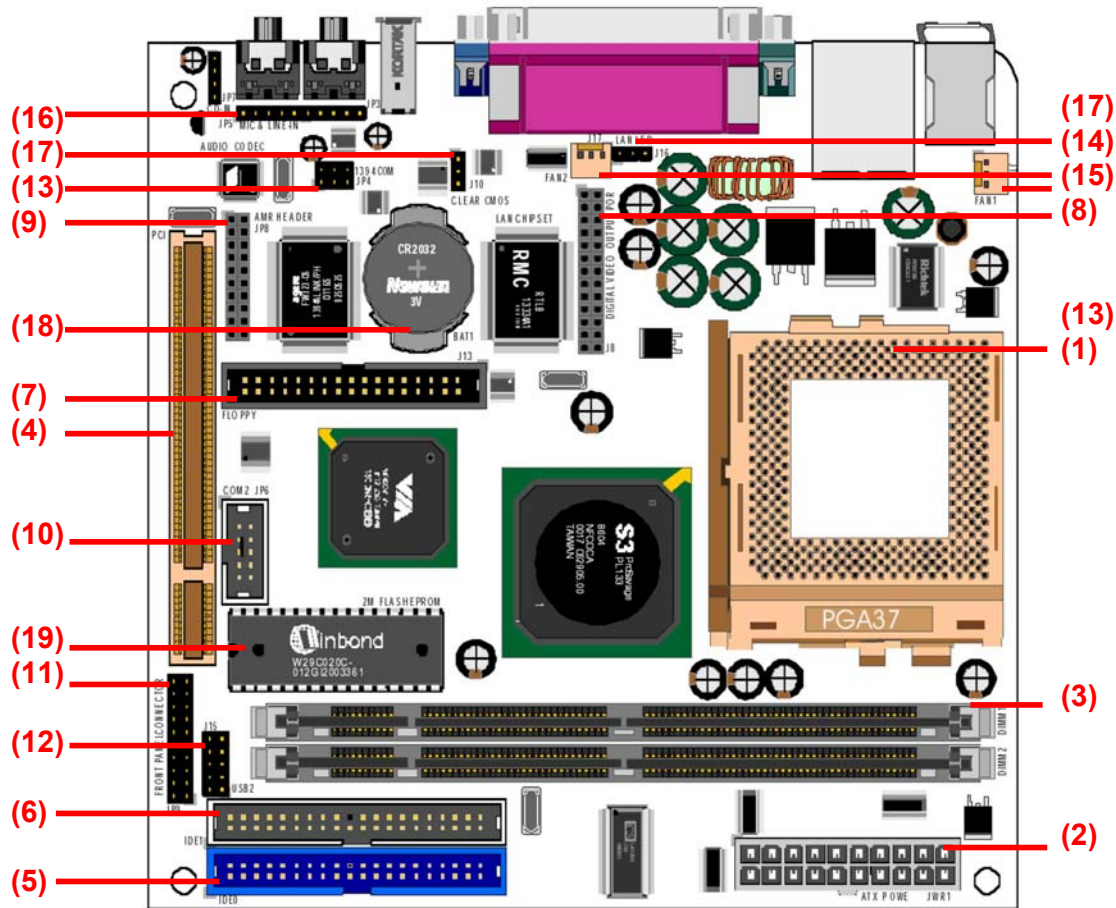
Mini-Flex ATX Socket 370  
PC133 Motherboard  
with Integrated SVGA,  
10/100 Mbps LAN, AC97 3D Audio  
IEEE1394 and TV-out Interfaces



## Specifications

<b>Form Factor</b>	Mini-Flex ATX / Mini-ITX Motherboard, 170 x 170 mm (W x L)
<b>CPU</b>	Socket 370 Intel Pentium-III / Celeron, VIA C3 CPU supported up to 1.26 GHz and above at 66/100/133 MHz FSB Intel Coppermine FC-PGA, Tualatin FC-PGA2 CPU supported
<b>Memory</b>	Two 168-pin DIMM slots support up to 1 GB PC133 SDRAM
<b>Chipset</b>	VIA 8604(T) and 686B
<b>Real Time Clock</b>	VIA 686B integrated RTC with onboard lithium battery
<b>Power Management</b>	ACPI 1.0 compliant, supports power saving mode with ATX PSU
<b>Expansive Slot</b>	1 x PCI expansive slot
<b>PCI Enhanced IDE</b>	Dual UltraATA/100 IDE channels up to 4 ATAPI devices
<b>VGA Interface</b>	VIA 8604 chipset built-in S3 Savage4 SVGA controller with 3D/2D engine and BIOS selectable 8/16/32 MB of video memory shared with system memory
<b>LAN Interface</b>	Onboard 10/100 Mbps LAN interface with RTL8139C chipset 10Base-T/100Base-TX auto-switching, IEEE802.3U compliant
<b>Audio Interface</b>	AC97 3D audio interface with line-in, line-out, CD-in, Mic-in
<b>1394 Interface</b>	Onboard IEEE 1394 interface with Lucent LW323 controller Supports 100/200/400 Mbps of data transfer rate
<b>Multiple I/O Port</b>	VIA 686B built-in super I/O controller FDD, PS/2 keyboard and mouse, parallel and IrDA ports 4 x USB ports (two external and two internal USB ports) 2 x RS-232C serial ports (one external and one internal)
<b>External I/O Port</b>	PS/2 keyboard and mouse RJ45 LAN, dual USB DB25 female parallel port, DB9 male COM1, DB15 female VGA 1394, audio Line-in/out
<b>Power Requirement</b>	Standard ATX power supply
<b>Board Dimension</b>	170 x 170 mm or 6.7 x 6.7 inches
<b>Operation Temperature</b>	0 ~ 60 <sup>o</sup> C (32 ~ 140 <sup>o</sup> F)

## Jumper and Connector Location

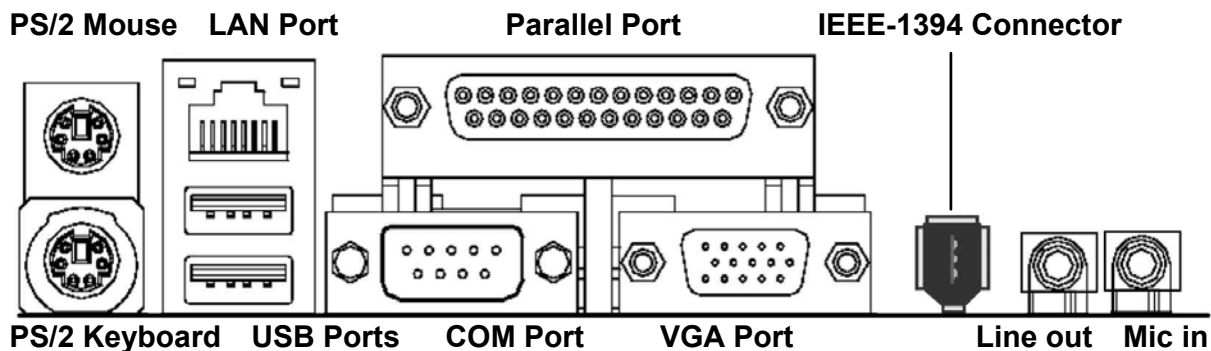


- |                                   |   |
|-----------------------------------|---|
| 1. PGA370 CPU Socket (PGA370)     | 11. Front Panel Connector (JP9)           |
| 2. ATX Power Connector (JWR1)     | 12. Internal USB Ports Connector (J15)    |
| 3. DIMM Socket (DIMM1-2)          | 13. IEEE1394 Port (JP4)                   |
| 4. PCI Connector (PCI1)           | 14. LAN LED Connector (J16)               |
| 5. IDE Connector (IDE0)           | 15. Fan Connector: FAN1 (J1) / FAN2 (J17) |
| 6. IDE Connector (IDE1)           | 16. Audio Connector (JP3/JP5/JP7)         |
| 7. Floppy Drive Connector (J13)   | 17. Clear CMOS (J10)                      |
| 8. Digital Video Output Port (J8) | 18. RTC Battery                           |
| 9. AMR Connector (JP8)            | 19. BIOS Flash                            |
| 10. Serial COM2 Port (JP6)        |   |

## Jumpers and Connectors

Jumpers		
J10	1-2	Normal Mode
	2-3	Clear CMOS
Connectors		
FAN1 (J1)	<b>CPU FAN Connector:</b> This 3-pin header is used for connecting a CPU chipset fan.	
FAN2 (J17)	<b>System Fan Connector:</b> This 3-pin header is used for connecting the case fan that keeps the system cool.	
JP4	<b>1394 Connector</b> This 6-pin header is used for the IEEE1394 devices.	
JP6	<b>COM2 Serial Port Connector:</b> This 10-pin header is used to connect a serial port extension bracket for adding a second serial port to your system.	
J8	<b>Digital Video Output Port:</b> This 26-pin header is used for connecting an Video port for use of Video devices.	
J13	<b>Floppy Port Connector:</b> This 34-pin header is used for connecting an Floppy port for use of Floppy devices.	
JP8	<b>AMR Expansion Connector</b> This 20-pin header is used for connecting to Audio Modem Riser Card	
J15	<b>Front USB Connectors:</b> This 10-pin header is used for connecting front panel USB ports 3 and 4.	
JP7	<b>CD-IN Connector:</b> This 4-pin header is used for connecting the CD ROM audio input to the sound card.	
JP3	<b>Line-out Connector:</b> This 5-pin header is used for connecting the stereo headphones or to amplified speaker.	
JP5	<b>MIC &amp; LINE-IN Connector</b> This 5-pin header is used for connecting the stereo microphone and stereo line-level input on the front panel.	
J16	<b>LAN LED Connector:</b> This 3-pin header is used for connecting LAN LED cable on the front panel.	

## I/O Ports



## Front Panel Connector

