

TEW-424UB

**54Mbps 802.11g Wireless USB 2.0 Adapter
Quick Installation Guide**

**Guide d'installation rapide du
54Mbps 802.11g USB 2.0 sans fil**

**Anleitung zur Schnellinstallation des
802.11g USB-2.0-Adapter mit 54MBit/s**

**Guía de Instalación Rápida
Adaptador inalámbrico USB 2.0 802.11g a 54Mbps**

**Руководство по быстрой установке
адаптера беспроводной связи 54 Мбит/с 802.11g Wireless USB 2.0**

Version 02.15.2005



TRENDnet
TRENDware, USA
What's Next in Networking

Table of Contents

English	1
1. Prepare for Installation	1
2. Install Hardware	2
3. Install Wireless Configuration Utility	3
4. Install Drivers	5
5. Wireless Configuration	13
Troubleshooting	17

English QIG

1. Prepare for Installation

Thank you for purchasing the TEW-424UB. Your new 54Mbps 802.11g Wireless USB 2.0 Adapter will allow you to connect to 802.11g or 802.11b networks and begin wirelessly sharing the Internet, files, and other resources.

This guide will help you set up and configure your Wireless USB Adapter. Following this installation should be quick and easy. If you run into problems, please refer to the Troubleshooting section or the more detailed installation procedures on the User's Guide CD-ROM. If you need further technical support, please visit www.TRENDNET.com or call technical support by phone.

Verify Package Contents

Please make sure you have everything in the box:



Minimum Hardware Requirements

Before installing this 802.11g Wireless USB Adapter, you should have a:

1. USB enabled computer
2. 300 MHz processor and 32 MB of memory (Recommended)
3. CD-ROM drive
4. 802.11g or 802.11b Access Point (for Infrastructure Mode) or another 802.11g wireless adapter (for Ad-Hoc/Peer-to-Peer networking mode).
5. Windows 98SE/ME/2000/XP

Note: Do not connect the Wireless USB Adapter to your computer until you have finished installing the Utility and Driver.

2. Install Hardware

The TEW-424UB is hot-pluggable. You can connect or disconnect the TEW-424UB while the computer is on.

Connect the TEW-424UB Wireless USB Adapter to your computer's USB port.

Note: you can use the included USB extension cable for your convenience to extend the cable connection between your computer and the TEW-424UB.



3. Install Wireless Configuration Utility

Windows 98SE/ME/2000/XP

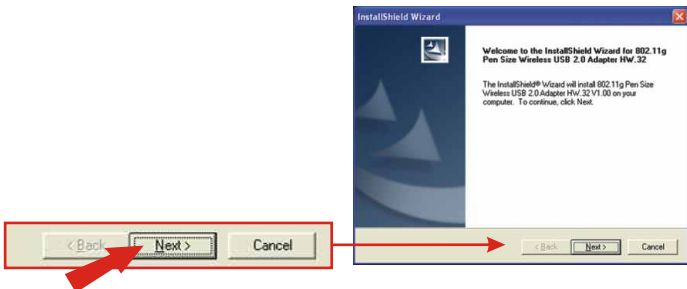
1. Insert the TEW-424UB CD-ROM into your computer's CD-ROM drive; the installation menu window will appear automatically. If the window does not appear automatically, click **Start**, click **Run**, and type **E:\Autorun.exe** in the text-field. Click **OK**.

Note: Replace "E" in "E:\Autorun.exe" with whichever letter is assigned to your CD-ROM drive.

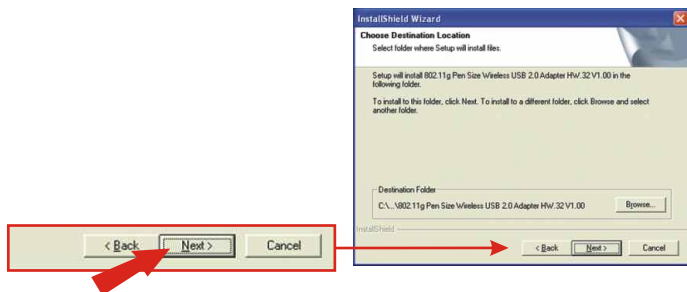
2. On the Installation Menu, click **Install Utility**.



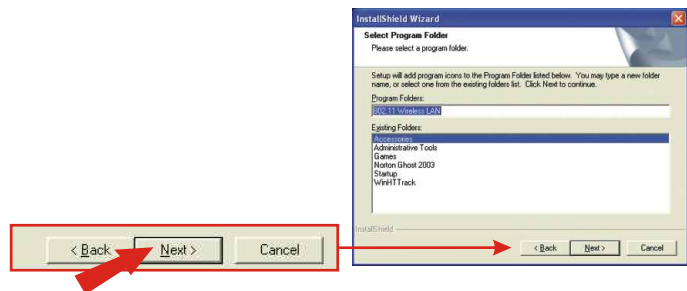
3. Follow the Install Shield Wizard's instructions to install the wireless configuration utility.
4. Click **Next**.



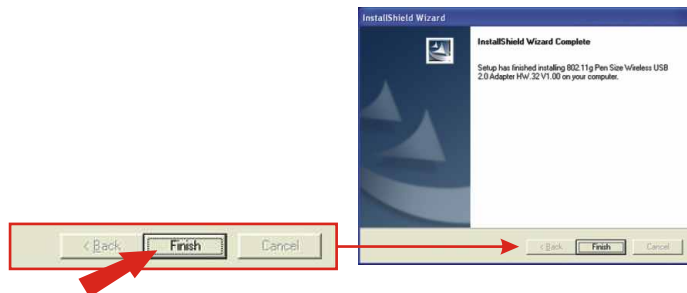
5. Click **Next**.



6. Click **Next**.



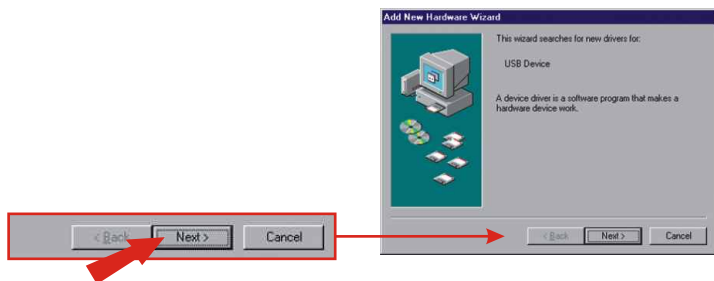
7. Click **Finish**.



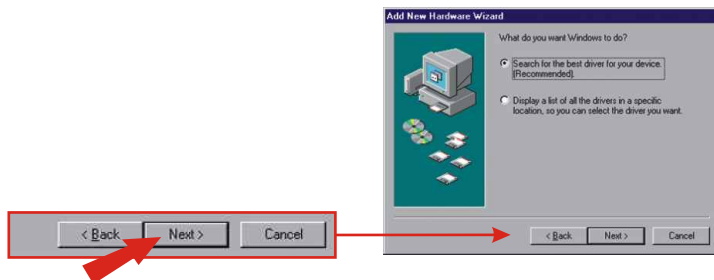
4. Install Drivers

Windows 98SE

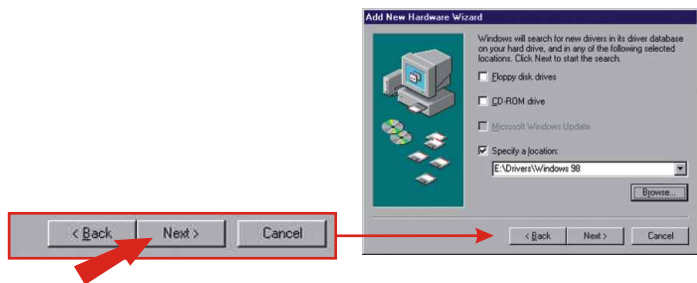
1. After installing the utility software, connect the Wireless USB Adapter to your computer's USB port. The "Add New Hardware Wizard" will appear. Verify that the TEW-424UB CD-ROM is in your CD-ROM drive. Then click **Next**.



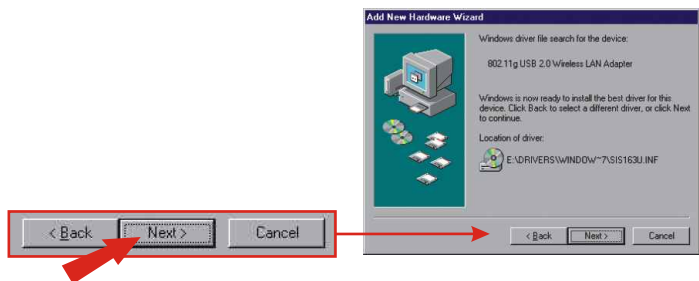
2. Click **Search for the best driver for your device (Recommended)**. Click **Next**.



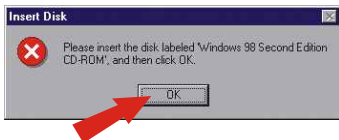
3. Click **Specify a location**, and type in **E:\Drivers\Windows 98**. Click **Next**.



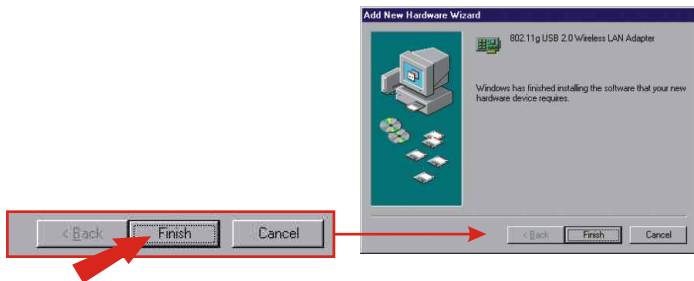
4. Click **Next**.



5. Click **OK**.



6. Click **Finish**.



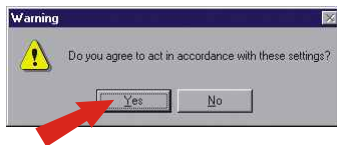
7. Click **Yes**.



8. After your computer reboots, select the country domain that applies to you, and click **OK**.



9. Click **Yes**.

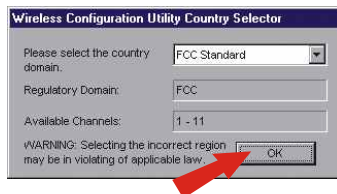


Note: After driver installation is complete, the wireless icon will appear in your system tray (next to the clock on the bottom right corner of your screen). If it does not appear, restart your computer. **Go to section 5 Wireless Configuration.**

Windows Me

After installing the utility software, connect the Wireless USB Adapter to your computer's USB port.

1. Select the country domain that applies to you and click **OK**.

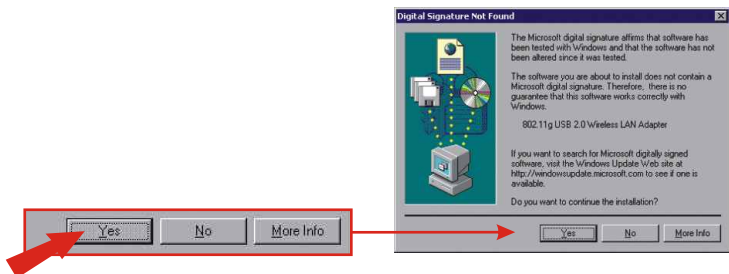


2. Click **Yes**.



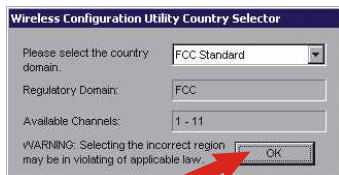
Windows 2000

1. After installing the utility software, connect the Wireless USB Adapter to your computer's USB port. Windows will detect new hardware and load the driver automatically.
2. When the Digital Signature Not Found Window appears, click **Yes** to continue.

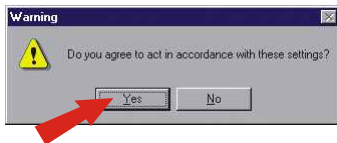


NOTE: TRENDnet's Wireless Adapters have been fully tested under all supported Windows Operating Systems and have been approved for their functionality.

3. Select the country domain that applies to you and click **OK**.



4. Click **Yes**.



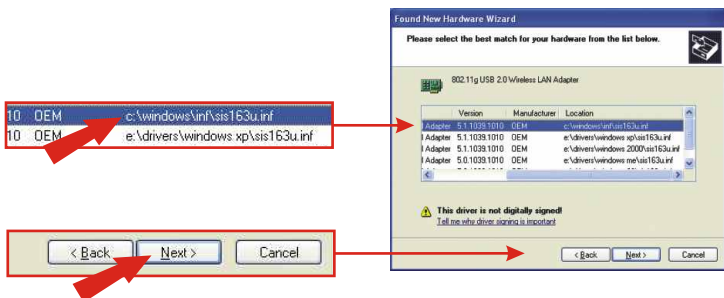
Note: After clicking Yes, the wireless icon will appear in your system tray (next to the clock on the bottom right corner of your screen). If it does not appear, restart your computer. **Go to section 5 Wireless Configuration.**

Windows XP

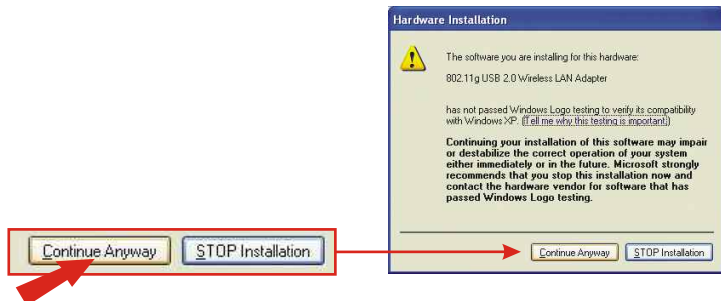
1. After installing the utility software, connect the Wireless USB Adapter to your computer's USB port. The "Found New Hardware Wizard" will appear. Verify that **Install the software automatically** is selected and that the TEW-424UB CD-ROM is in your CD-ROM drive. Then click **Next**.



2. Select **c:\windows\inf\sis163u.inf** and Click **Next**.

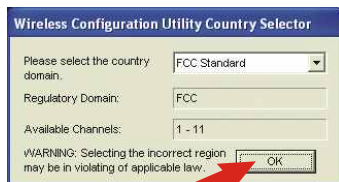


3. A warning message will tell you that the device you're installing has not yet been certified for Windows XP compatibility. Click **Continue Anyway**.



NOTE: TRENDnet's Wireless Adapters have been fully tested under all supported Windows Operating Systems and have been approved for their functionality.

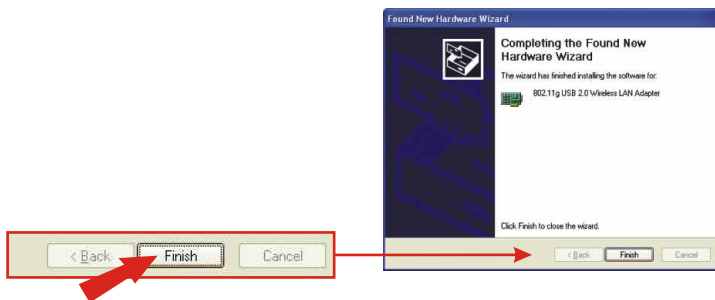
4. Select the country domain that applies to you and click **OK**.



5. Click **Yes**.



6. The "Found New Hardware Wizard" will tell you that it has finished installing the software for your TEW-424UB. Click **Finish**.

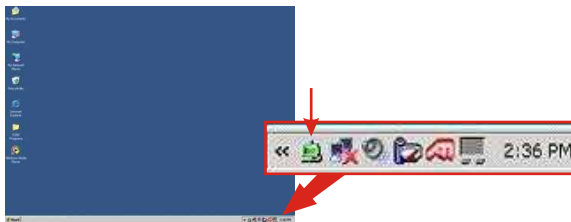


Note: After clicking **Finish**, the wireless icon will appear in your system tray (next to the clock on the bottom right corner of your screen). If it does not appear, restart your computer. **Go to section 5 Wireless Configuration.**

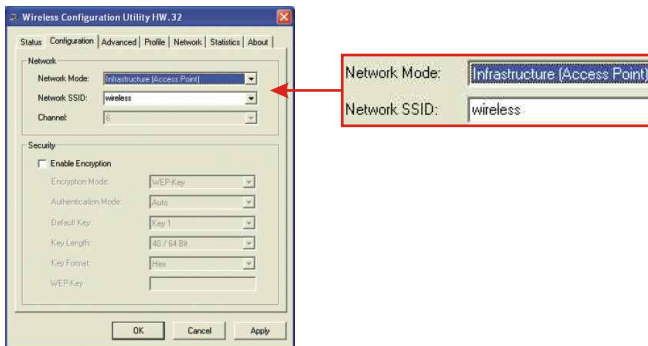
5. Wireless Configuration

Infrastructure Mode (PC-to-Access Point connection)

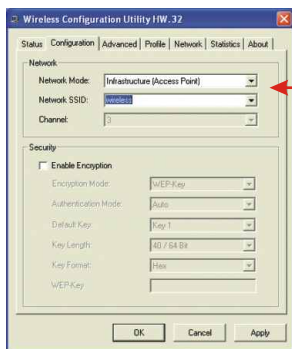
1. Double-click the wireless computer icon in your system tray (next to the clock in the bottom right corner of your screen).



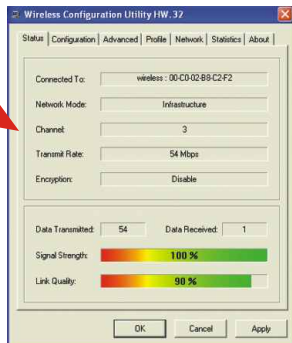
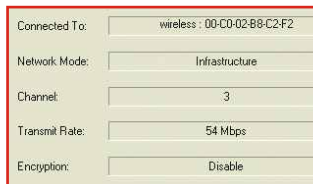
2. Click the Configuration Tab. Select **Infrastructure** (Access Point) as the Network Mode.



3. Enter a Network SSID that matches the SSID of your Access Point. (If you are unsure of your Access Point's SSID, refer to your Access Point settings) Click **Apply**.

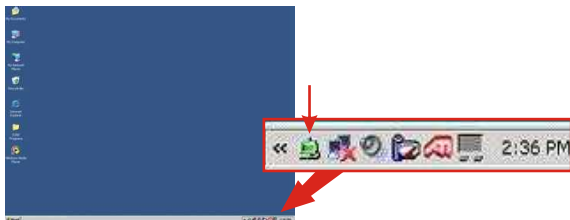


4. Click the Status tab; if you see connection information, your card's wireless configuration is complete.

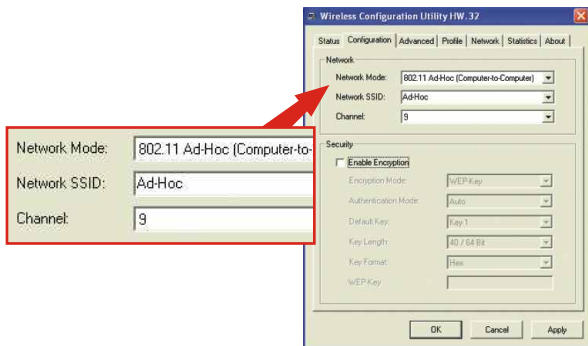


Ad-Hoc Mode (PC-to-PC connection)

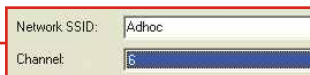
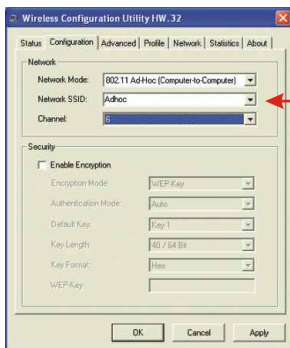
1. Double-click the wireless computer icon in your system tray (next to the clock in the bottom right corner of your screen).



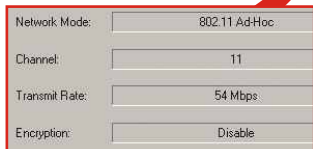
2. Click the Configuration Tab. Select **802.11 Ad-Hoc** (Computer to Computer) as the Network Mode.



3. Enter a Network SSID that matches the SSID of the wireless card you will be connecting to. (If you are unsure of your other wireless card's SSID, refer to that card's settings)



4. Because you are configuring an Ad-Hoc network, you must select a Channel then click **Apply**.
5. Click the Status tab; if you see connection information, your card's wireless configuration is complete. (**Ad-hoc mode requires at least 2 wireless adapters to establish the connection**)



Your Wireless Network Adapter is now configured and ready for use!

Troubleshooting

Q1: I completed all the steps in the quick installation guide, but my wireless USB Adapter isn't connecting to my access point. What should I do?

A1: First, you should first verify that the Network SSID matches your wireless router or access point's SSID. Second, you should check your TCP/IP properties to ensure that Obtain an IP address automatically is selected. Third, you can click on the Site Survey link to check and see if there are any available wireless networks listed.

Q2: Windows is unable to recognize my hardware. What should I do?

A2: Make sure your computer meets the minimum requirements as specified in Section 1 of this quick installation guide. Also, you must install the wireless configuration utility (as described in Section 3) before connecting the wireless USB Adapter.

Q3: I cannot open the wireless configuration utility. What should I do?

A3: Go to your device manager (control panel → system) to make sure the adapter is installed properly. If you see a networking device with a yellow question mark or exclamation point, you will need to reinstall the device and/or the drivers.

If you still encounter problems, please refer to the User's Guide CD-ROM or contact technical support.

Contact Technical Support

Telephone: +1-310-626-6252

Fax: +1-310-626-6267

Website: www.TRENDNET.com

E-mail: support@trendware.com

Technical Support Hours

7:00AM ~ 6:00PM

Monday through Friday

Pacific Standard Time (except holidays)

Certifications

This equipment has been tested and found to comply with FCC and CE Rules. Operation is subject to the following two conditions:

- (1) This device may not cause harmful interference.
- (2) This device must accept any interference received.
Including interference that may cause undesired operation.





What's Next in Networking

Product Warranty Registration

Please take a moment to register your product online.
Go to TRENDware's website at <http://www.TRENDNET.com>

TRENDware International, Inc.
3135 Kashiwa Street
Torrance, CA 90505

<http://www.TRENDNET.com>